

11 July 2018



Kiwaniis®

KIWANIS FOUNDATION OF CANADA
LA FONDATION CANADIENNE DU KIWANIS

Caribbean Hurricane Relief Update



In September 1917, Hurricanes Irma and Maria caused significant destruction in the Caribbean. Kiwanians in the Caribbean were not spared the devastation wrought by the wrath of Mother Nature. And those who were unscathed were deeply involved in the relief efforts.

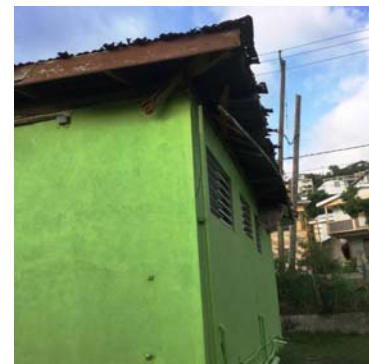
At the instigation of the EC&C leadership, the Kiwanis Foundation of Canada has formed an ad hoc committee to direct a fundraising initiative in support of the relief effort. The Foundation pledged to match donated funds - \$1 for every \$2 donated. By the time the fundraising initiative ended on January 31, 2018, Kiwanis Clubs and individual Kiwanians had donated \$73,656 as follows:

- EC&C - \$64,281
- Western Canada - \$4,175
- PNW - \$5,200

The Kiwanis Foundation of Canada provided a match of \$36,828, for a total of \$110,484.

The ad hoc committee, chaired by Past International President, Dr. John Button, reviewed relief proposals and approved the following funds distribution:

1. Kiwanis Club of Genipa Oeuv Soc. –Martinique - \$7,500 to rebuild destroyed playgrounds.
2. N lz dq lv# Foxe# r i# N dk r x dq h# v x# I w# u# J x d g h a x s h# D# ' : /833 # r# h# e x l g# h w u r | h g# s a | j u r x q g v l



3. Three schools on the island of Dominica:



Sdl{#Erxfkh\$uhvfkrro#u#r#hsdlu#kh#rri/#hldqj/#
 icrru/#lqgrz v#lqg#grruv
 Shqylch#\$uhvfkrro#u#r#hsdlu#kh#rri/#hldqj/#icrru/#
 z lqgrz v#lqg#grruv
 Judqg#lrgg#\$uhvfkrro#u#r#hsdlu#kh#rri/#hldqj/#
 icrru/#lqgrz v#lqg#grruv

The estimated cost to repair the three schools is approximately \$100,000. The funds will be distributed over a period of time, as construction progresses. On-site supervision in Dominica will be provided by Past EC&C Governor Paul Toussaint. Paul will be travelling by boat from his home on Martinique to Dominica, where he will be staying with family members during the project.

Kids Need Kiwanis

Kiwanis Foundation of Canada
www.kfcdn.org
 (519) 304-3038
office@kfcdn.org

N lz dq lv#lrxqgdwlrq#r i#f dqdg d#i#SR #E r { #8 3 6 7 /#E udqwlrug /#R Q #Q 6 W#9 M: #f dqdg d

X qv xevfulch#-uhfls lhwv#hp dlc#

X sqdwh#Sur ilh#i#Derxw#F rgvwdqg#F rgwdfw#

Vhqwe | #ghz vdwwhuC nifgqlruj #lq#f røderudwlrq#z lk



Wu| #hp dlc#p dunhwqj #iru#i#hh#ægd| \$#